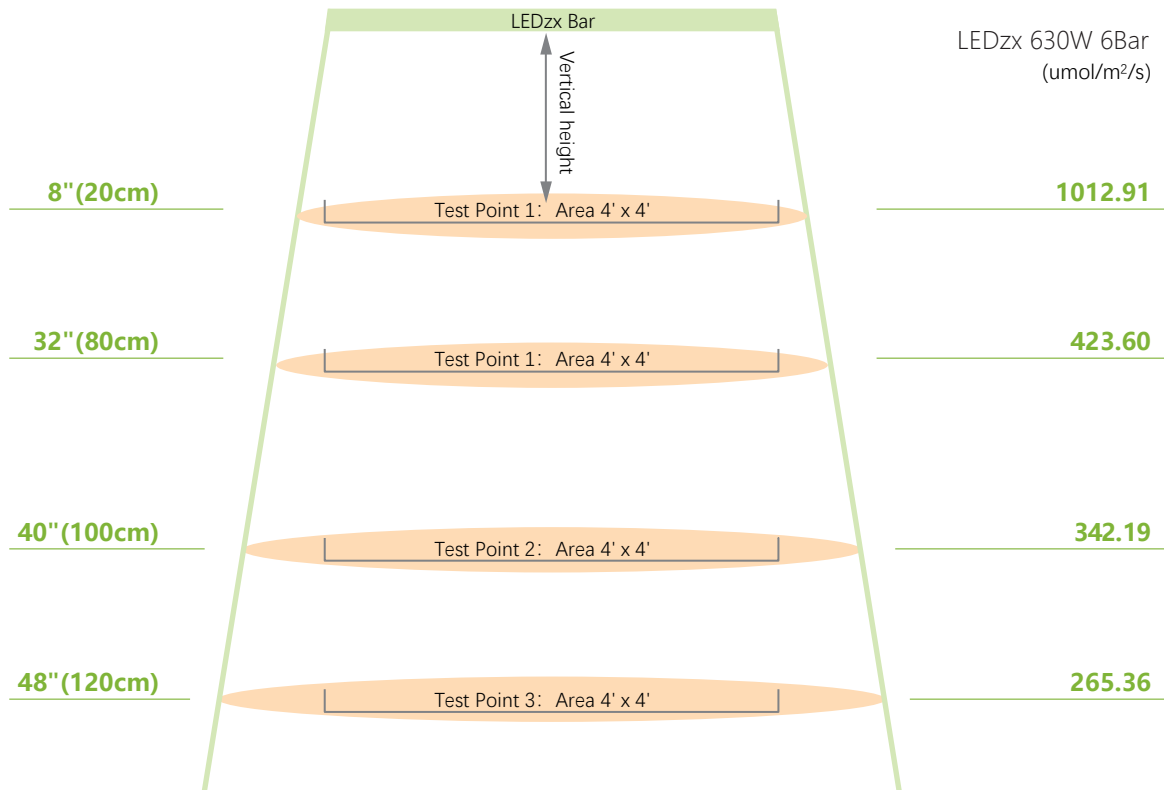
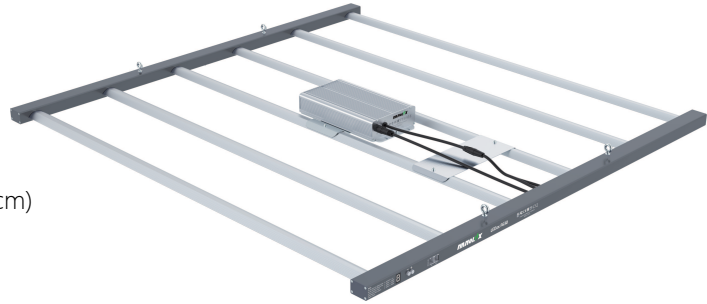


## LEDzx 630W 6Bar PPFD Test Data

LEDzx test environments:

1. Input power: 630W (**6 LED bars**)
2. Lighting footprint: area 4' x 4' (120cmx120cm)
3. At height of 8"(20cm)/32"(80cm)/40"(100cm)/48"(120cm)
4. Test equipment: special plant spectrum analyzer



### LEDzx 630W 6Bar

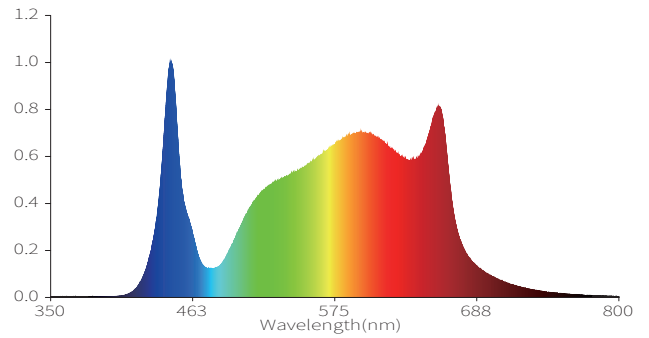
Height	LEDzx 630W PPFd test (umol/m <sup>2</sup> /s)		
	Max	Min	Average
8"(20cm)	1012.91	798.42	905.67
32"(80cm)	456.02	233.76	344.89
40"(100cm)	342.19	193.42	267.81
48"(120cm)	265.36	172.29	226.74

Height	LEDzx 630W illuminance test K (Lx)		
	Max	Min	Average
8"(20cm)	65.84	51.89	58.87
32"(80cm)	29.42	15.16	22.29
40"(100cm)	22.17	12.53	17.35
48"(120cm)	17.73	11.68	15.38



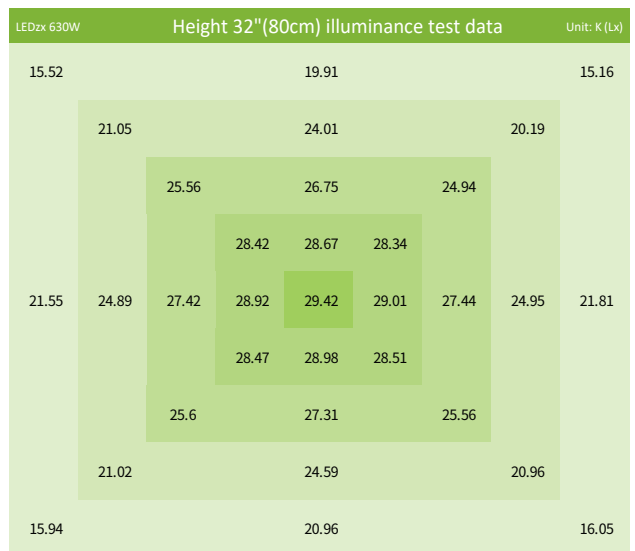
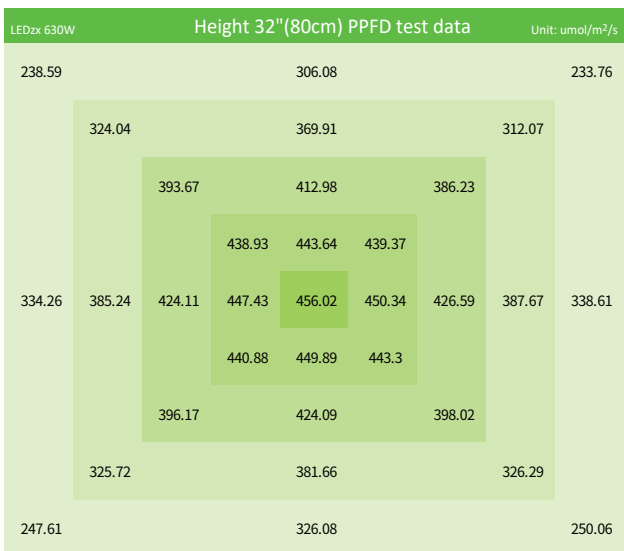
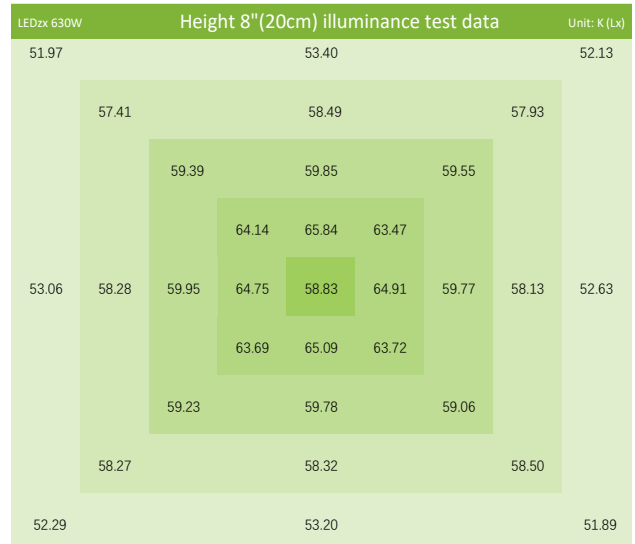
Horticultural Lighting  
If Nanolux doesn't make it  
You don't need it

## LEDzx 630W PPFD (6 Bar)

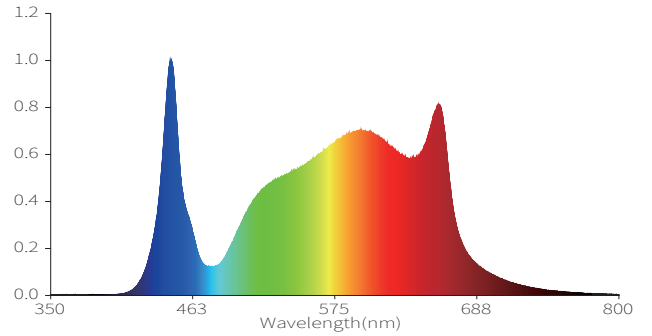


Height 8"(20cm)	Average	Max	Min
PPFD	905.67	1012.91	798.42
Illuminance	58.87	65.84	51.89

Height 32"(80cm)	Average	Max	Min
PPFD	344.89	456.02	233.76
Illuminance	22.29	29.42	15.16



## LEDzx 630W PPFD (6 Bar)



Height 40"(100cm)	Average	Max	Min
PPFD	267.81	342.19	193.42
Illuminance	17.35	22.17	12.53

Height 48"(120cm)	Average	Max	Min
PPFD	226.74	265.36	172.29
Illuminance	15.38	17.73	11.68

